

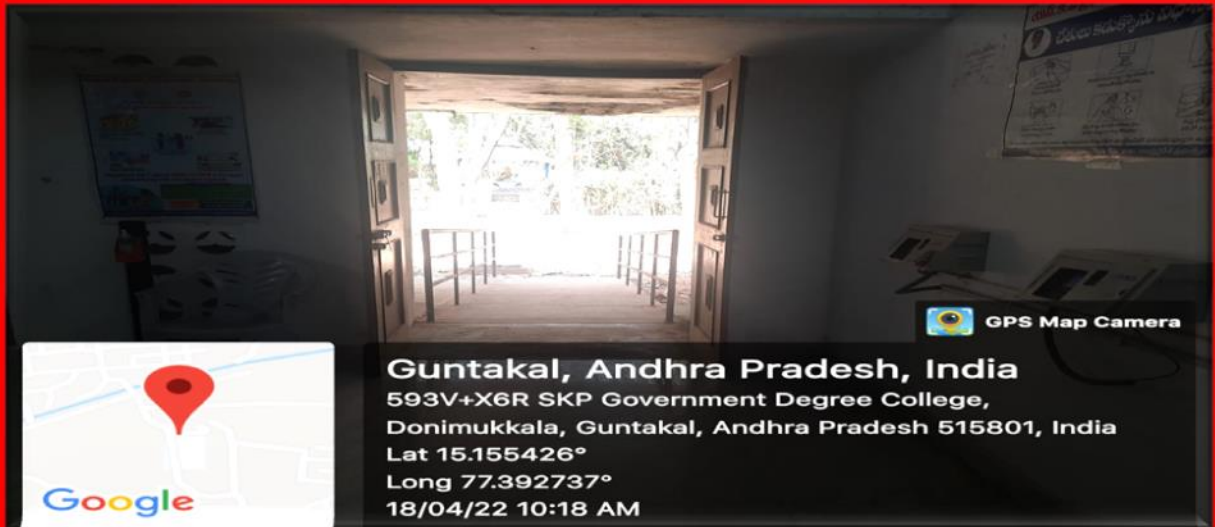
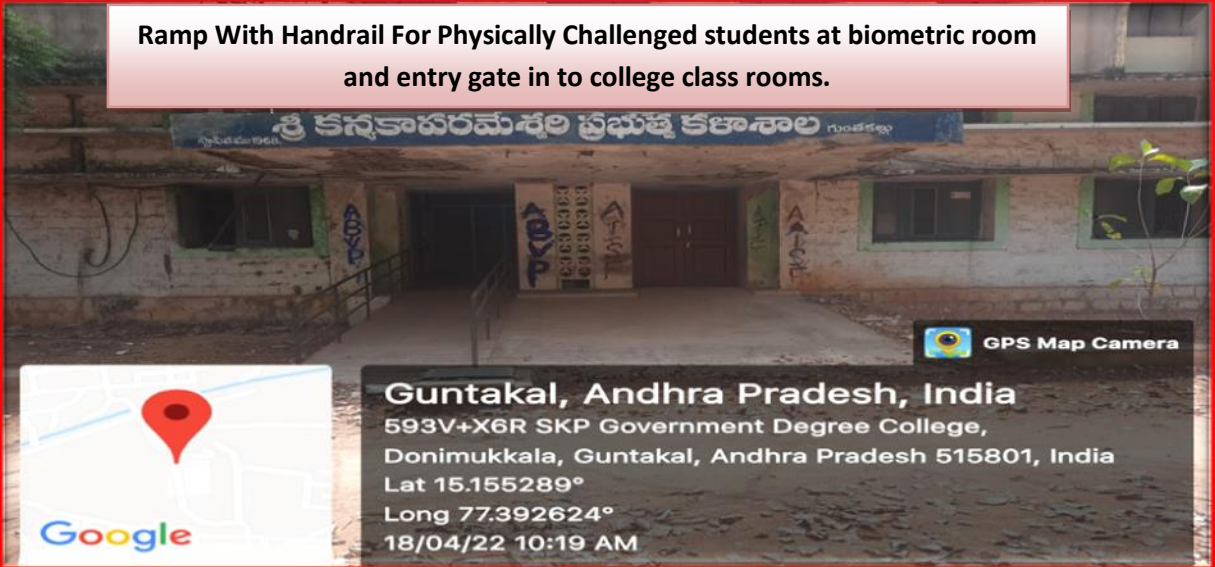
7.1.2 - GREEN CAMPUS INITIATIVES INCLUDE:

SKP GOVT. COLLEGE GUNTAKAL-515801



GREEN CAMPUS INITIATIVES

Ramp With Handrail For Physically Challenged students at biometric room and entry gate in to college class rooms.





Emergency Wheel chair



Bio-Metric Machine



2.3 Lush Green Institute Garden

Green Landscaping with Trees and Plants—the campus is beautifully landscaped and has received appreciation. Plantation of around 1000 plants has been done including a number of exotic plants. An active ECO club ensures the organization of tree plantation on World Environment Day, various awareness programs were & events conducted every year. A rich variety of flora and fauna predominates the natural landscape of the campus. Exotic fruit trees are also planted in the campus.



2.4 RAIN WATER HARVESTING

Water scarcity is serious problem throughout the world for both urban & rural community. Urbanization, industrial development & increase in agricultural field & production has resulted in over exploitation of groundwater & surface water resources and resultant deterioration in water quality. The conventional water sources namely well, river and reservoirs, etc. are inadequate to fulfill water demand due to unbalanced rainfall. While the rain water harvesting system investigate a new water source.

In SKP GC campus a rain water harvesting system is made. The runoff water from the nearby fields channelized into a recharge well located near the south-West corner of the campus. The runoff from this unpaved area is intercepted at a collection trench. From here the run off eventually rains into an abandoned open well, which facilitates ground water recharge.



2.5 RESTRICTED ENTRY OF VEHICLES AND PARKING

In SKP GC campus, entry of private vehicles is restricted to keep the campus clean and green

USE OF SOLAR ENERGY

The College uses solar energy to meet its power needs



USE OF LED

As a step towards energy saving, total lightings of class rooms, labs and hostel are replaced with LED panels. The outcomes of LED lights are given below:-

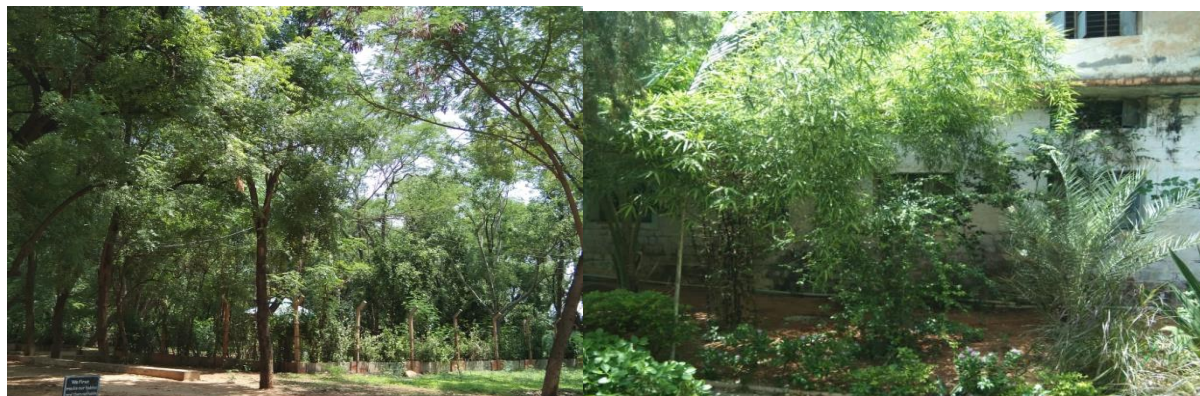
- Long life. The components of an LED and the way that they generate light significantly extend the life span of the bulbs....
- Energy efficiency....
- High brightness and intensity....
- Exceptional colour range....
- Low radiated heat....
- Reliability....
- Instantaneous illumination....
- Directional lighting.

2.6 PARTIAL PAPER LESS OFFICE

All offices works are partially done on paperless concept. Information through mail, Google groups, Whats App Groups, Google classrooms, etc. as much as possible. High speed Wi-Fi facility is also provided for this. Other practices like, re-use of one-sided paper for notes, sketches, rough work, rough printouts, etc.; cashless transactions, and utilizing multiuser printer at central administrative locations of the Institute office also aims at reducing the use of papers.

2.7 PLANTATION OF SHADY TREES AND MEDICINAL PLANTS

The campus is beautifully landscaped. Plantation of around 1000 plants has been done including a number of medicinal plants. An active Botanical club ensures the organization of tree plantation on World Environment Day, College level Green awareness programs & events every year. A rich variety of flora and fauna predominates the natural landscape of the campus. Medicinal trees and Plants are also planted in the campus.

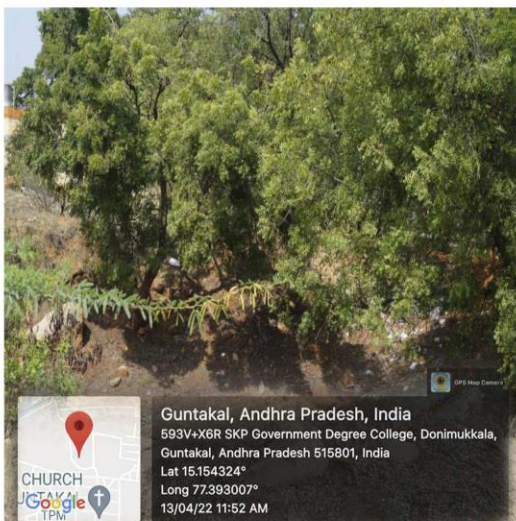
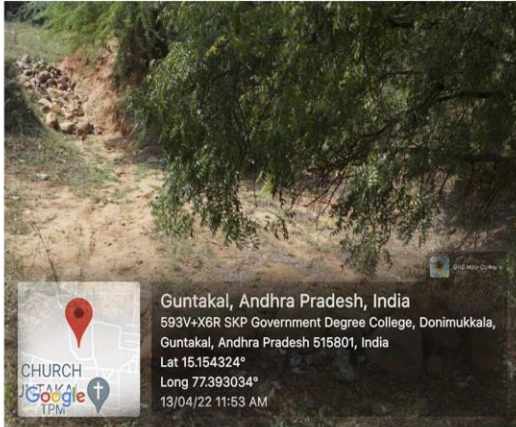




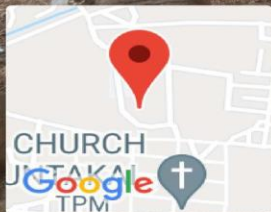
Installation in the College:- Solar Energy system started in this college in 2017 and the entire college is equipped with this solar system. It is helpful in saving power bills and also very economical. The supply is given to all the Principal Chamber, Departments, Staff Rooms, Auditorium, college office and Class Rooms.



GDC , GUNTAKAL , ANANTHAPURAM DIST : WATER HARVESTING PITS BEFORE RAINS AND AFTER RAINS (FILLED WITH WATER)



GDC , GUNTAKAL , ANANTHAPURAM DIST : CONSTRUCTION OF TANKS AND BUNDS



Guntakal, Andhra Pradesh, India
593V+X6R SKP Government Degree College, Donimukkala,
Guntakal, Andhra Pradesh 515801, India
Lat 15.154324°
Long 77.393034°
13/04/22 11:53 AM



SKP GOVERNMENT DEGREE COLLEGE :: GUNTAKAL

Degradable and Non-Degradable Waste

All the degradable and non-Degradable waste collected in the college campus and is placed at one particular point. Daily the workers of the municipal department come to the college campus along with their van and collects the entire waste dumped in the college. These wastes include degradable and non-Degradable which are dumped separately in green and red baskets. Green basket is filled with degradable waste and red basket is filled with non-Degradable waste.







GPS Map Camera

Guntakal, Andhra Pradesh, India

593V+X6R SKP Government Degree College, Donimukkala,

Guntakal, Andhra Pradesh 515801, India

Lat 15.155625°

Long 77.392807°

14/12/22 12:55 PM GMT +05:30